



MK-ST
Load Cell Tension

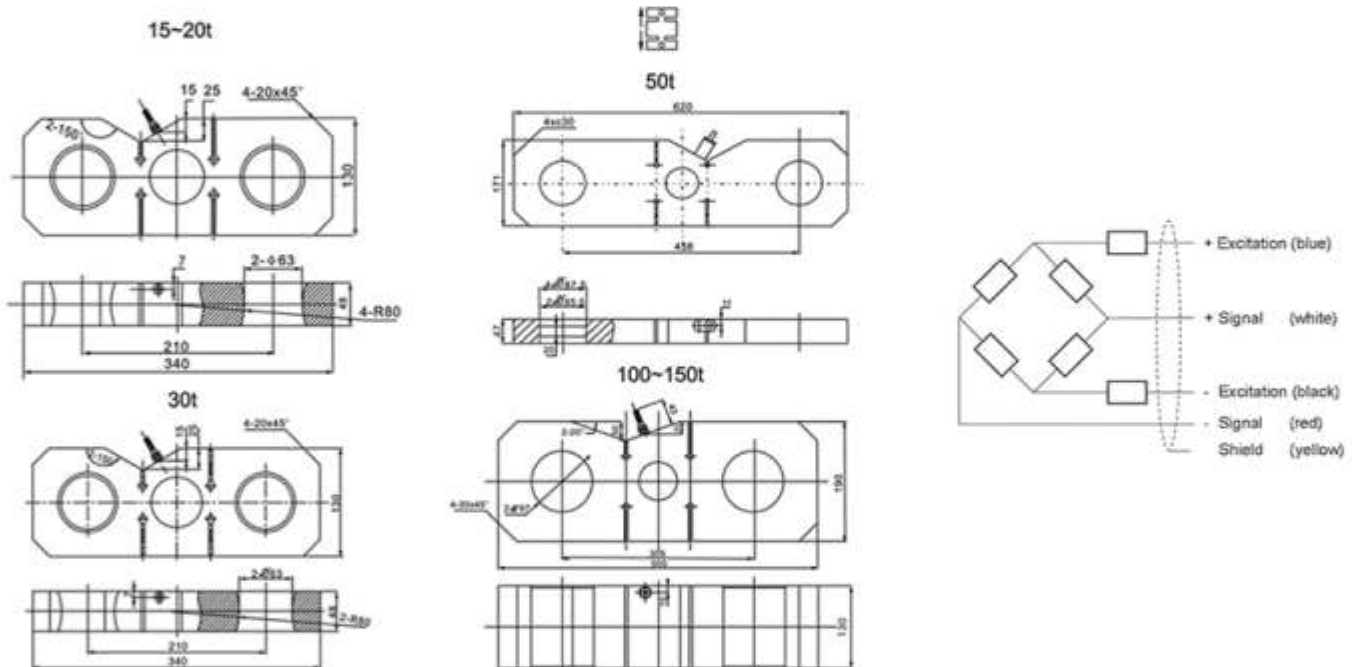


MK - ST



FEATURE:

- Unique design load cell
- Heavy duty for Tension high capacity
- Easy to installation, good interchangeability
- Constructed of excellent capability in anti erosion, moisture proof
- 5 core high quality orange cable
- Suitable in crane, hopper scales, and other special weighing instruments



SPECIFICATION

Rated Load	15,20,30,50,100,150t	Temperature, operating	-30°C~+70°C
Rated Output	2.0±0.002mV/V(30-50t);1.5±0.01mV/V(100-150t)	Maximum safe overload	120%F.S
Total error	±0.05%F.S	Ultimate overload	150%F.S
Creep error (30min)	±0.02%F.S	Excitation, recommended	10-12V DC
Zero balance	±1%F.S	Excitation, maximum	15V DC
TC ZERO	±0.02%F.S/10°C	Protection class	IP67
TC SPAN	±0.02%F.S/10°C	Construction	Alloy Steel
Input resistance	400±10Ω	Cable	Length: 12m
Output resistance	352±3Ω		Diameter: Φ 5mm
Insulation resistance	≥5000MΩ		

